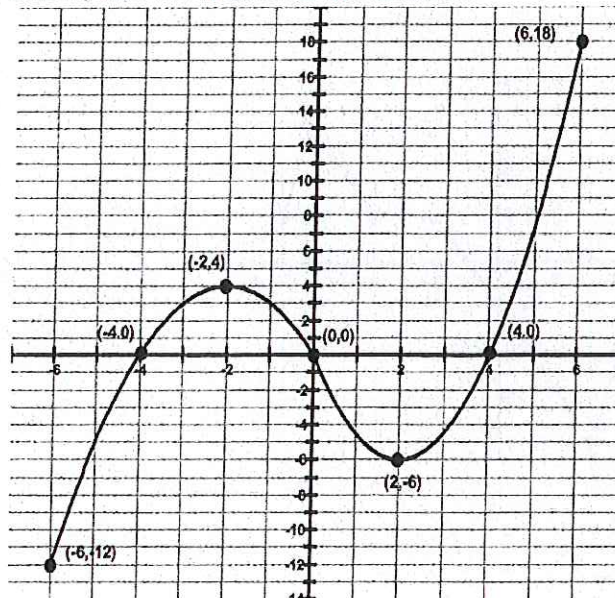
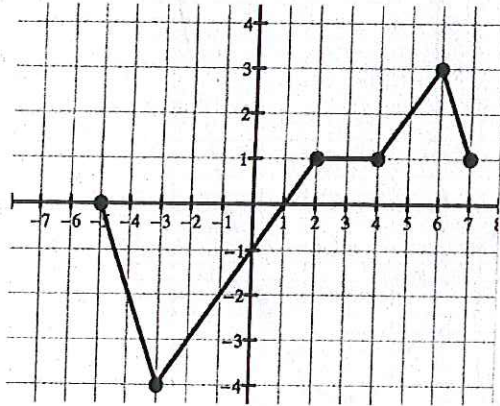


1. For the graph  $f(x)$  below, find the indicated information.



- Find  $f(0)$ .
- Find  $f(2)$ .
- Find  $f(-6)$ .
- Is  $f\left(\frac{3}{2}\right)$  positive or negative?
- Is  $f(-1)$  positive or negative?
- For what numbers is  $f(x) = 0$ ?
- For what numbers is  $f(x) < 0$ ?
- What is the domain of  $f(x)$ ?
- What is the range of  $f(x)$ ?
- What are the coordinates of the x-intercepts?
- What are the coordinates of the y-intercept?
- How often does the line  $y = -3$  intersect the graph?
- How often does the line  $x = 1$  intersect the graph?
- Find a value of  $x$  for which  $f(x) = 7$ .

2. For the graph  $g(x)$  below, find the indicated information. Write answers in interval notation where appropriate.



- Find  $g(5)$ .
- State the intervals of  $x$  where the graph is increasing.
- State the intervals of  $x$  where the graph is decreasing.
- State the interval of  $x$  where the graph is constant.
- State the coordinates of the  $x$ -intercept(s).
- State the coordinates of the  $y$ -intercept.
- State the domain.
- State the range.
- Find any local maxima.
- Find any local minima.